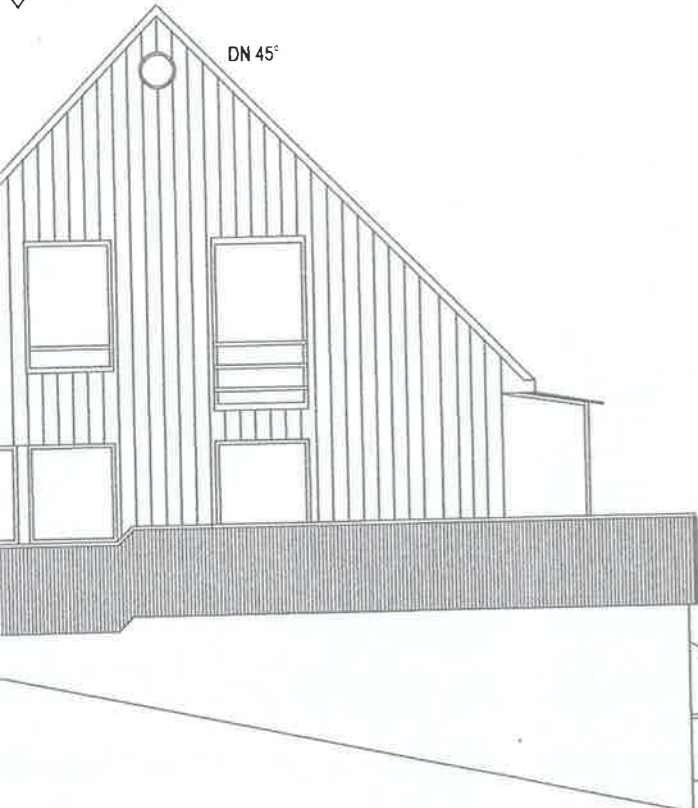


96.17



DN 45°

Kirchberg 9



GRUNDSTUECKSGRENZE



+294.61⁵

+291.72⁵

+289.33⁵

+292.02

+292.80

DN 30°

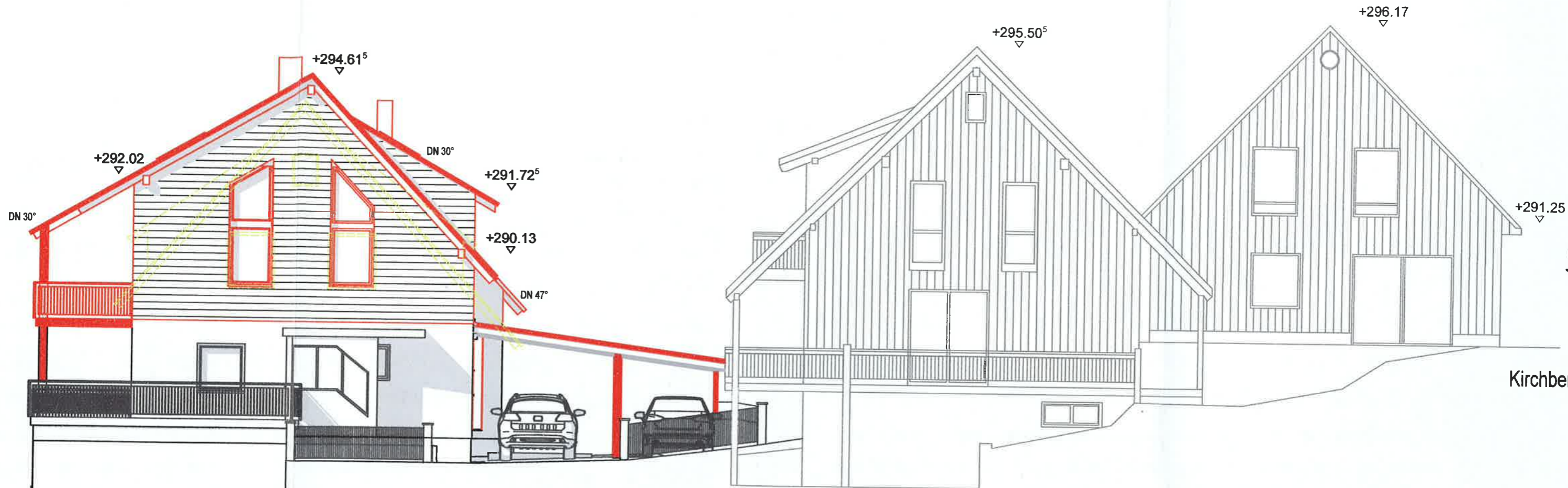
DN 30°

DN 40°

DN 20°

DN 47°

Kirchberg 14



Kirchberg 11

HT SÜD-WEST